

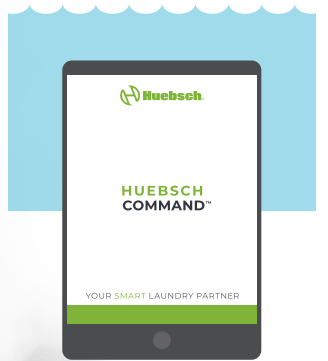
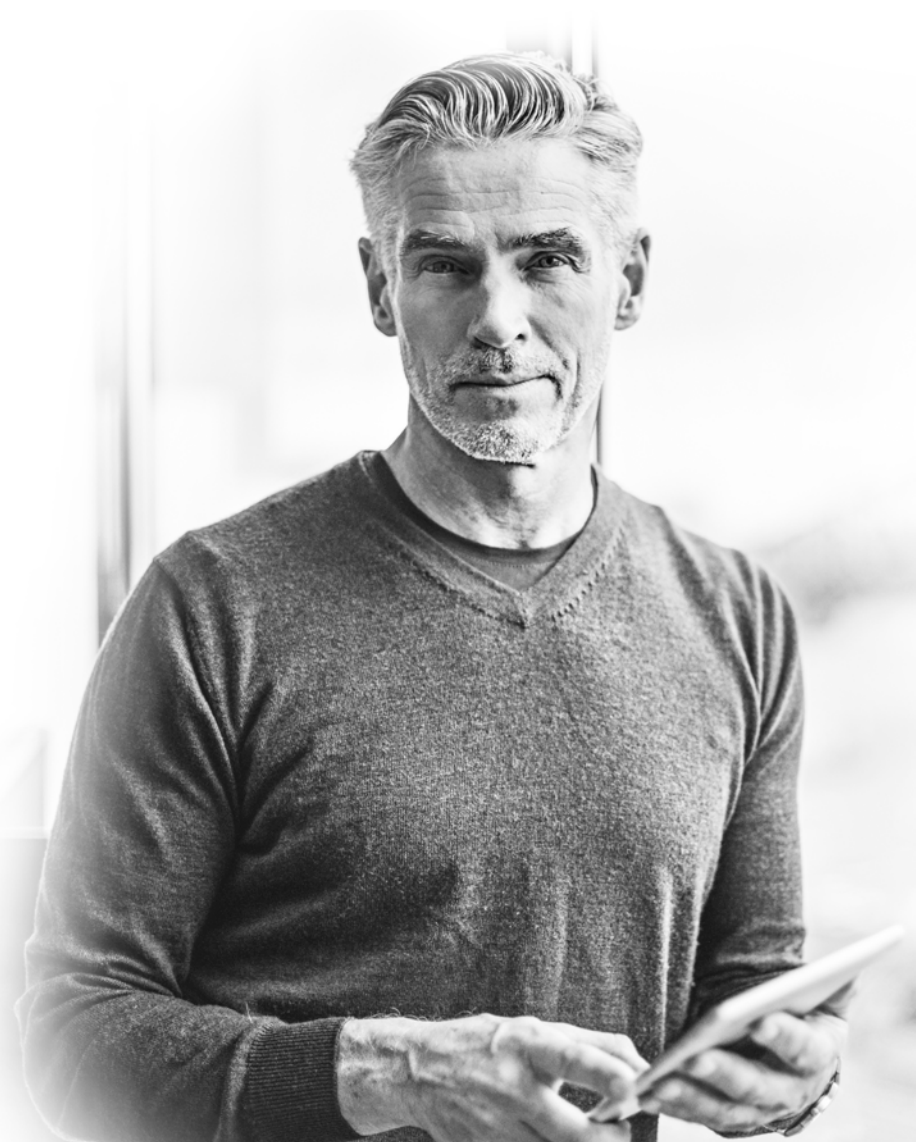
HUEBSCH COMMAND™ NETWORKING:

INTUITIVE, REAL-TIME LAUNDROMAT
DATA THAT'S CUSTOM-MADE FOR
THE WAY **YOU OPERATE.**

OUR MISSION: A LAUNDROMAT THAT'S AS SMART AS YOU ARE

Huebsch Command™ gives you the reporting, monitoring and configuration capabilities you need to do what you do best: make intelligent business decisions.

- REAL-TIME PERFORMANCE DATA
- ADJUST WATER LEVELS
- REMOTE START & SYSTEM MONITORING
- CONFIGURE MACHINES FROM THE CLOUD
- SET TIME-OF-DAY/ DAY-OF-WEEK PRICING
- TURNS PER DAY
- MULTILEVEL VENDOR PRICING CHANGES
- SERVICE ALERTS VIA EMAIL OR TEXT
- 100% SUPPORTED AND UPGRADED BY HUEBSCH

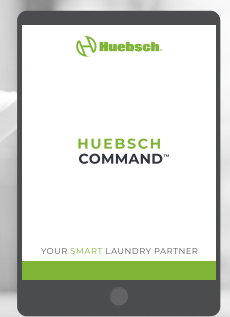


12

3

PEAK CUSTOMER USAGE: **FRIDAY**

60-LB WASHER EXTRACTOR #1: **DRAIN ERROR**



6

COMPATIBLE GALAXY™ 600 MODELS
For more information, please visit:
<http://www.huebsch.com/products/vended-laundry>



COMMERCIAL FRONT LOAD WASHERS



COMMERCIAL WASHER EXTRACTORS



COMMERCIAL STACK TUMBLE DRYERS

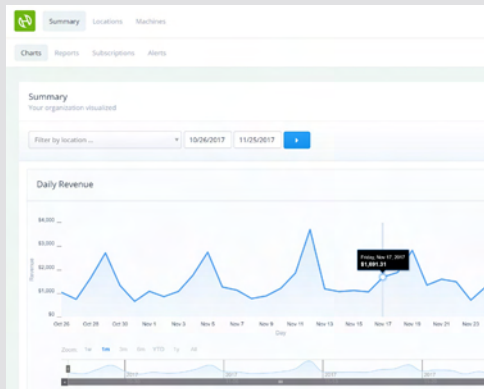


COMMERCIAL SINGLE TUMBLE DRYERS

WHAT MAKES HUEBSCH YOUR **IDEAL PARTNER?**

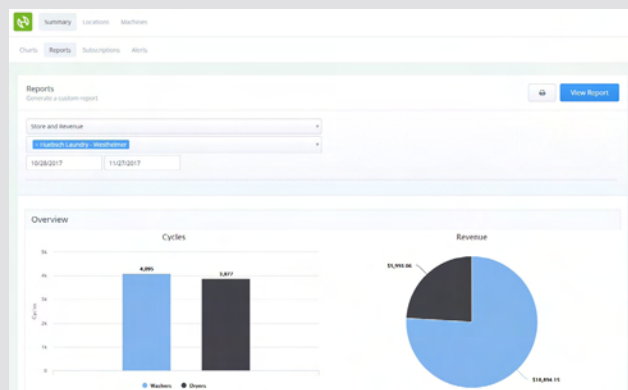
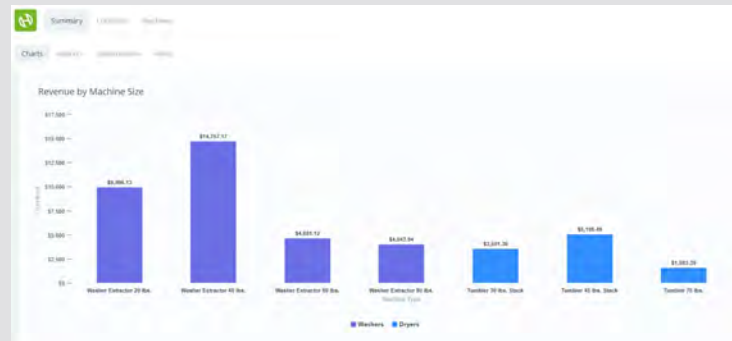
It's simple: We understand that when you have the facts—all the facts—there's no limit to what you can accomplish with your business. With an intuitive interface and easy-to-use tools, Huebsch Command™ gives you maximum oversight which, in turn, leads to maximum efficiency, and of course, maximum profit.

HUEBSCH COMMAND™ – **SUMMARY TAB**



- Interactive dashboards can be configured to show revenue, turns and a host of other values.
- Store owners can set Key Performance Indicator (KPI) goals for performance tracking.
- Show all locations or drill down to a single store.

- Location graphs for revenue and turns expand for individual machine view.
- Single location or all locations.
- Exportable to PDF or Excel for further analysis.
- Customizable date range to allow view by day, week, month, etc.



- All existing Galaxy™ 600 audit reports are accessible within Huebsch Command.
- Any Huebsch Galaxy 600 report can be subscribed to via email or sent to distribution list, another employee, etc.

HUEBSCH COMMAND™ – **FACILITIES TAB**

Map view allows multiple locations to be grouped with a drag-and-drop boundary. Choosing a location will bring up specific information about that location—machine status, profitability reports, etc.

Machine	Status	Last Updated
D 0001 Frontload Washer S/N 1406017056	READY TO START	2 minutes ago Jun 15, 2017 11:39 am
W 0050 Dryer S/N 15687352	AVAILABLE	2 minutes ago Jun 15, 2017 11:39 am
W 0002 Dryer S/N 1703013842	AVAILABLE	a few seconds ago Jun 15, 2017 11:41 am
D 0250 Frontload Washer S/N 1703011683	READY TO START	2 minutes ago Jun 15, 2017 11:39 am

HUEBSCH COMMAND – **MACHINES TAB**

All features of the Galaxy Control are available. Configure machines with programs based on machine capacity and type. Programs can be sent to a single machine, or all machines of that type in all stores and can be scheduled to allow day-of-week pricing, etc.

WE **KEEP YOU CONNECTED** – NOT TIED DOWN

Wireless, cloud-based and retaining all the Galaxy™ features you love, Huebsch Command™ lets you optimize your business from anywhere in the world with an internet connection. Better yet, it's supported and upgraded by Huebsch®, so after an initial setup that takes literally minutes, you can rest assured it will always save you time—and never waste it.

EASY TO USE

CAN BE USED ON DESKTOP, LAPTOP OR TABLET – ALL MAJOR WEB BROWERS

RECEIVE SERVICE ALERTS VIA TEXT OR EMAIL



EASY TO INSTALL

- NO STATIC IP ADDRESS REQUIRED
- NO FIREWALL CHANGES
- NO NEED FOR DEDICATED IT RESOURCES

CLOUD-BASED – NO SOFTWARE TO INSTALL



EASY TO INTEGRATE

BACKWARD COMPATIBLE WITH EXISTING GALAXY 600 INSTALLATIONS ON EQUIPMENT MANUFACTURED AFTER JANUARY 1, 2017 – SIMPLY INSTALL NETWORKING BOARD IN EACH MACHINE

GALAXY SOFTWARE NEEDED ONLY TO SET THE NETWORK ADDRESS FOR EACH MACHINE



WHERE WILL YOU TAKE **YOUR BUSINESS** NEXT
AND WHERE WILL IT TAKE YOU?

**For more information, contact your
top-quality-rated Huebsch Distributor
or visit www.Huebsch.com/Command**